



# POD<sup>®</sup> HD500 Edit



## Installer Guide

A user guide to installing the POD HD500 Edit application on Mac<sup>®</sup> & Windows<sup>®</sup> computers



# Table of Contents

**Preparing to Install .....1•1**

    Get the POD HD500 Edit Application ..... 1•1

    System Requirements ..... 1•1

**Installation on Mac OS® X .....2•1**

    Installing POD HD500 Edit ..... 2•1

    Uninstalling POD HD500 Edit ..... 2•6

**Installation on Windows®.....3•1**

    Installing POD HD500 Edit ..... 3•1

    Uninstalling POD HD500 Edit ..... 3•7

**Line 6 Monkey™ & Additional Resources.....4•1**

    Updating with Line 6 Monkey™ ..... 4•1

    Online Documentation ..... 4•2

*Line 6, POD, POD HD500, DT50, CustomTone, Variax and Line 6 Monkey are trademarks of Line 6, Inc. All other product names, trademarks, and artists' names are the property of their respective owners, which are in no way associated or affiliated with Line 6.*

Copyright © 2011 Line 6, Inc.



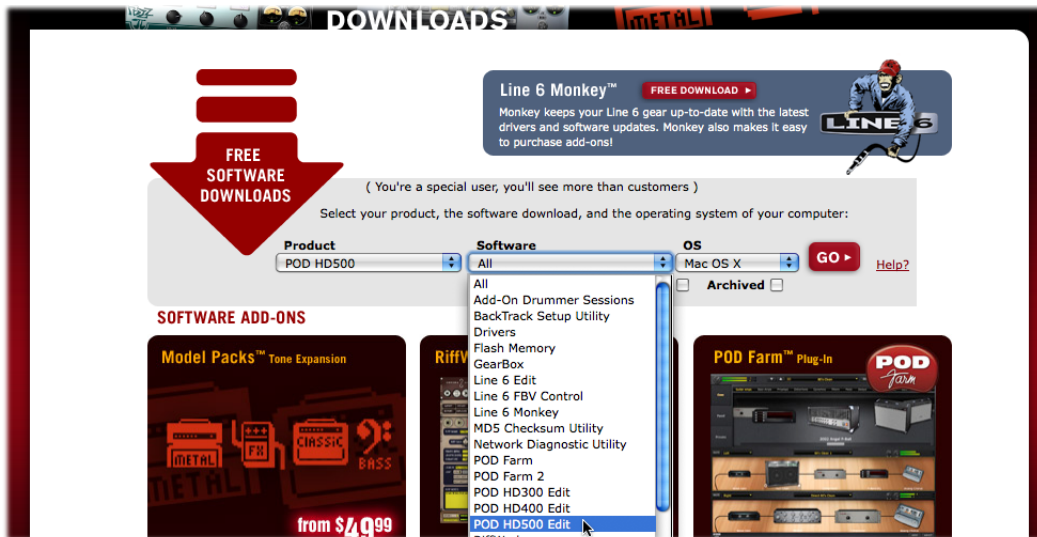


# PREPARING TO INSTALL

This guide will walk you through the installation process for Line 6 POD<sup>®</sup> HD500 Edit, the free Preset editor/librarian application for Line 6 POD<sup>®</sup> HD500 devices, for Mac<sup>®</sup> or Windows<sup>®</sup>. Here are a few pointers before you install the software.

## Get the POD HD500 Edit Application

The latest POD HD500 Edit application installer is always available for free download from [www.line6.com/software/](http://www.line6.com/software/).



The Line 6 Software Downloads page

Or, if you already have the Line 6 Monkey application installed on your computer, you can use it to grab POD HD500 Edit, as well as any available product updates (please see [“Updating with Line 6 Monkey™” on page 4•1](#)).

## System Requirements

We recommend that you read the separate *POD HD500 Edit Release Notes* documentation for the full, detailed System Requirements, as well as up to date info on compatibility with other hardware, software and operating systems. This documentation is available from the [Line 6 Support](#) or [Product Manuals](#) pages.

POD HD500 Edit supports the following computer operating systems:

- Mac OS<sup>®</sup> X
  - 10.5 (Leopard<sup>®</sup>)
  - 10.6 (Snow Leopard<sup>®</sup>)



- Windows®
  - Windows® XP Service Pack 3
  - Windows Vista® Service Pack 2
  - Windows® 7
  
- POD HD500 Edit is a 32 bit application, but is compatible with both 32 bit and 64 bit Windows® & Mac® versions.

**Please proceed to the Mac® or Windows® chapter for step-by-step installation instructions:**

[“Installation on Mac OS® X” on page 2•1](#)

[“Installation on Windows®” on page 3•1](#)





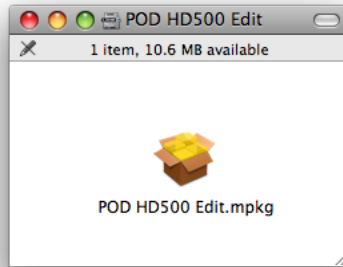
# INSTALLATION ON MAC OS<sup>®</sup> X

---

To follow are illustrated steps for installing POD<sup>®</sup> HD500 Edit on Mac OS<sup>®</sup> X 10.5 (Leopard<sup>®</sup>). The installation process is the same if installing on Mac OS<sup>®</sup> X 10.6 (Snow Leopard<sup>®</sup>). Exit all other applications, and then proceed with the following steps.

## Installing POD HD500 Edit

If you obtained the POD HD500 Edit installer by running Line 6 Monkey<sup>™</sup> (see [“Updating with Line 6 Monkey<sup>™</sup>” on page 4•1](#)), then you’ll see the following initial screen. If you downloaded the POD HD500 Edit installer from the Line 6 Software Downloads site, then you’ll need to double-click on the downloaded POD HD500 Edit (“.dmg”) file to open the following screen.



Double-click on **POD HD500 Edit.mpkg** as instructed to launch the installer.



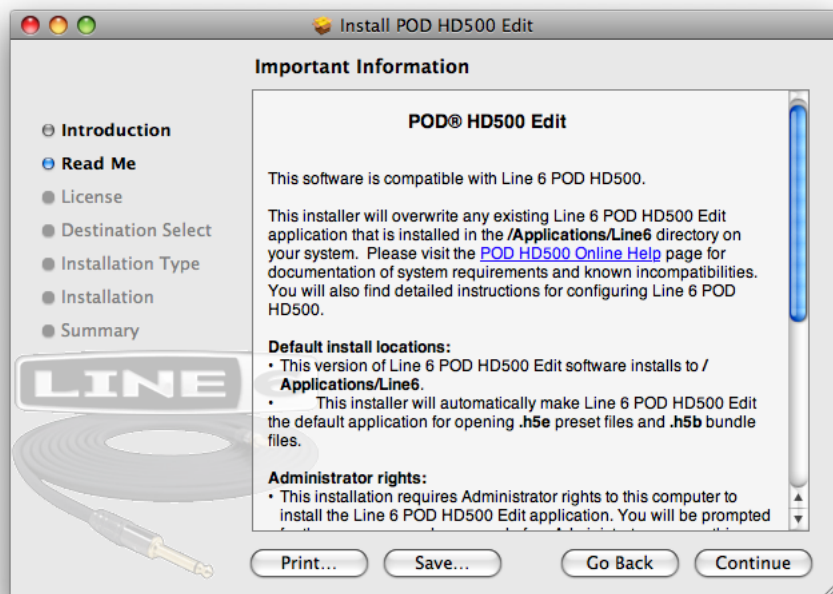
## Welcome

When the installer starts, you will see the Welcome screen - read the text and click **Continue**.



## Read Me

The POD HD500 Edit “Read Me” screen is presented next. It’s called “Read Me” for a good reason! Please review the information carefully, and click **Continue** when ready to proceed.

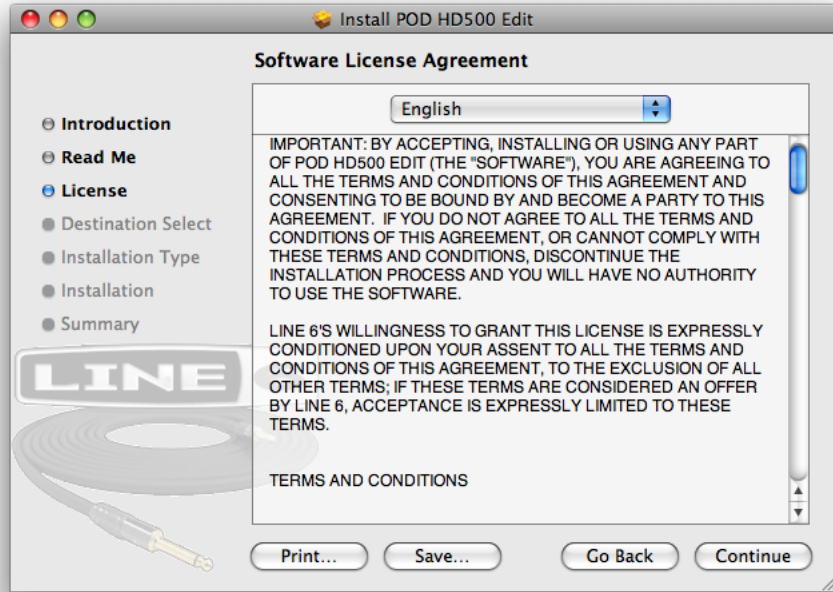




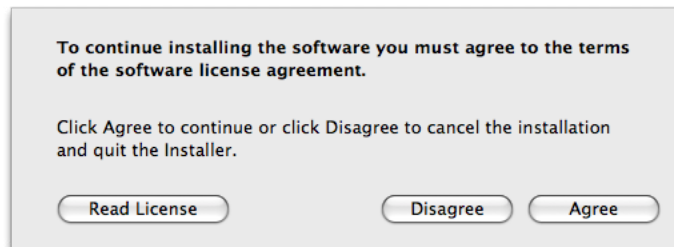


## License Agreement

The installer presents you with the License Agreement. Read through the entire Agreement carefully, then click **Continue**.



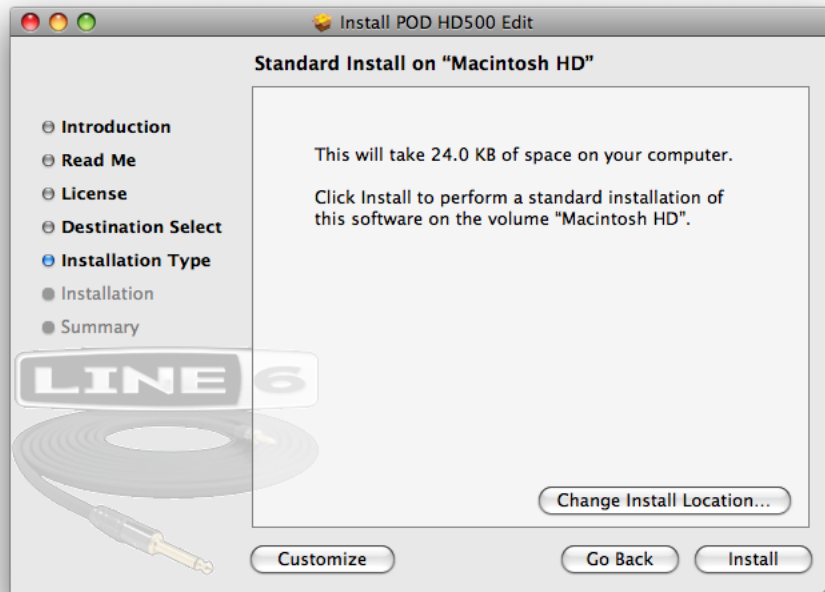
You'll then be prompted to accept this License Agreement. Select **Agree** if you consent to the terms and the Installer will allow you to proceed. If you disagree, you cannot install POD HD500 Edit.



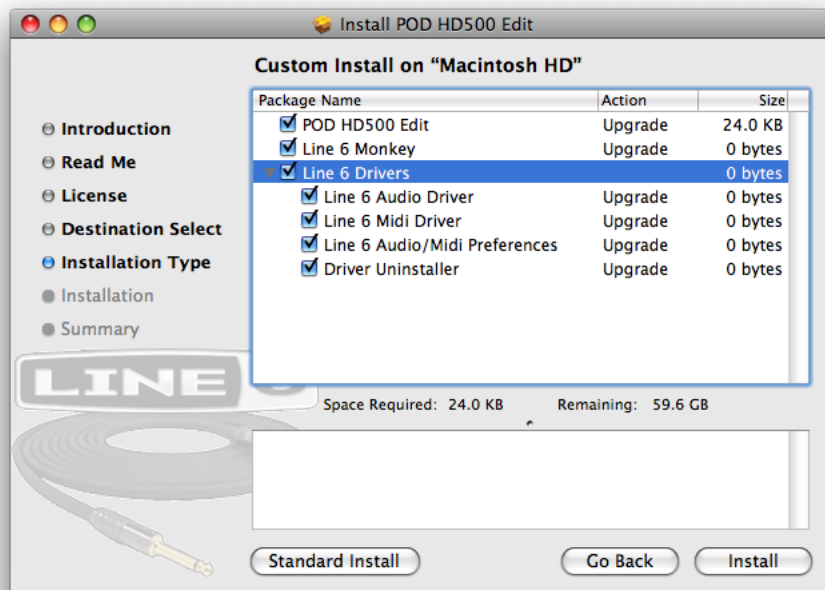


## Installation Type

Here you have the choice to proceed with the “standard” installation, which essentially installs all necessary components (recommended for most users). Just click on **Install** to proceed with the standard installation. Or, click on the **Customize** button to select the specific components you want installed (for more advanced users).



If you clicked the **Customize** button, you’ll see the following screen:





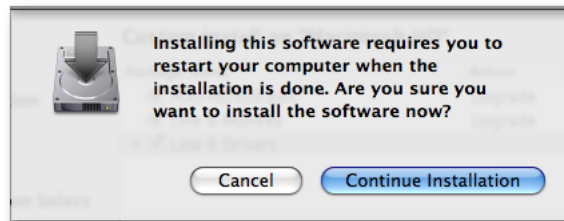
There are three main items available here. To “customize” your installation, check the desired components:

- The **POD HD500 Edit** application.
- The **Line 6 Monkey** application. If you already have the same (or newer) version of Line 6 Monkey installed, then the box for it will remain unchecked. (Please see [page 4•1](#) for more about Line 6 Monkey.)
- The **Line 6 Drivers**. It required to install all these driver components to allow the POD HD500 Edit application to communicate with your device. The drivers also provide the benefit of allowing you to utilize your POD HD500 device as a high performance USB audio and MIDI device with any popular Mac® DAW or audio playback applications!

Click **Install** once you’ve made your selections.

### Restart Prompt

If you chose the standard installation, or checked the Line 6 Drivers components within the custom installation screen, you may be alerted that restarting your Mac® is necessary at the end of the installation process.



If you really don’t want to restart, the **Cancel** button will abort the installation. Otherwise, just click **Continue Installation** to finish the job!

### Install - Authenticate

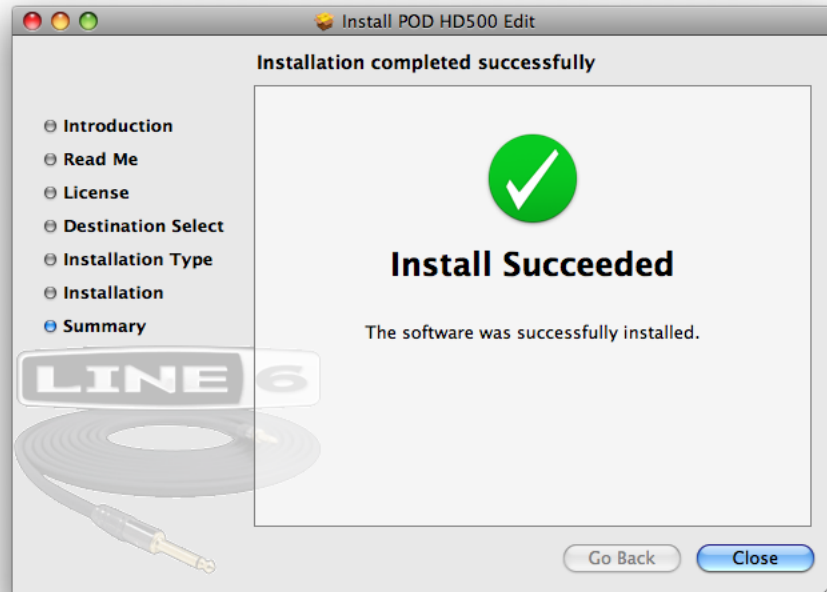
You will be prompted to authenticate your Mac® account name and password. Enter the credentials then click **OK**. The installation process will then run until completed.





## Finish

And...tada! You're done. Click **Close** to exit the installer.



It is recommended that you next run Line 6 Monkey to allow it to check your system and see if there are any other available updates for your system.

Please see [“Updating with Line 6 Monkey™” on page 4•1](#) for more information.

## Uninstalling POD HD500 Edit

To remove the application from your computer, simply drag the **POD HD500 Edit** file from the Applications/Line 6 folder into the Trash. This will not remove your POD HD500 Edit Preset, Set List or Bundle files.

By default, POD HD500 Edit saves all its Preset, Set List & Bundle files within the **/Documents/Line 6/Tones/POD HD500 Edit** folder. If you want to permanently remove all these files, drag this folder to the Trash. However, we highly recommend you keep these around if you plan on installing POD HD500 Edit again. Or, copy the folder to a disk if you want to back them up or move them to another computer!





# INSTALLATION ON WINDOWS®

To follow are illustrated steps for installing POD HD500 Edit on Windows® 7. The installation process is the same if installing on Windows Vista® or Windows® XP.

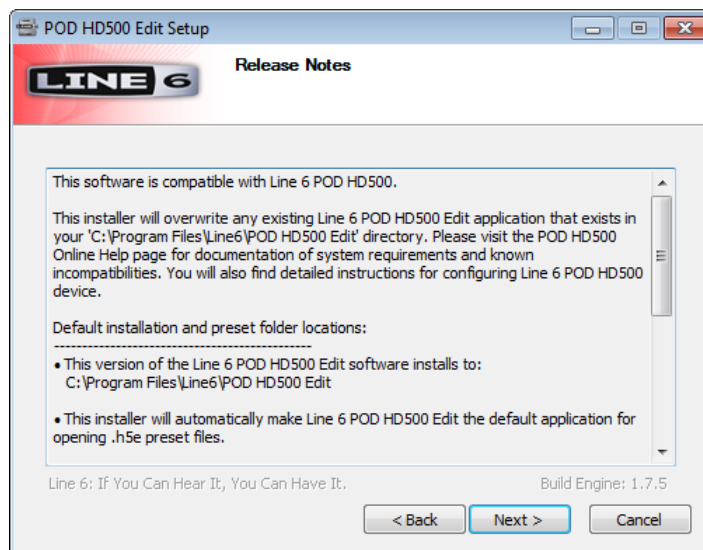
## Installing POD HD500 Edit

When the installer starts, you will see the Welcome screen - Click **Next** to continue.



## Release Notes

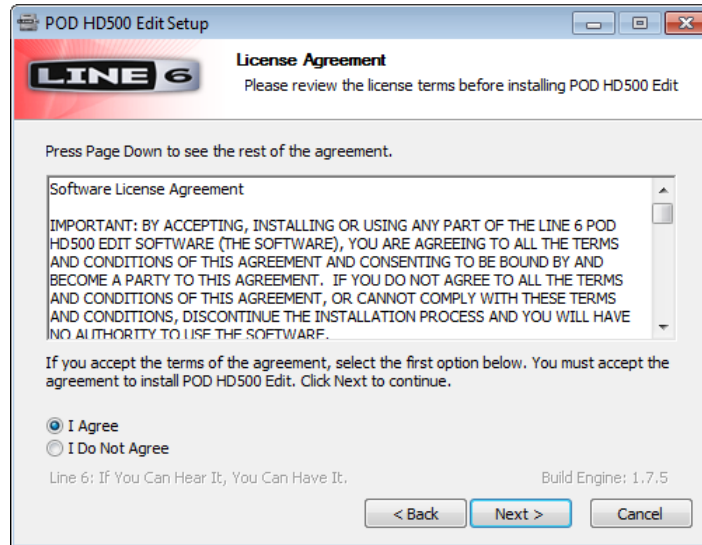
A dialog with detailed Release Notes is presented. Read it through carefully and click **Next** to proceed.





## License Agreement

The installer presents you with a License Agreement that is required in order to install and use the Line 6 POD HD500 Edit application. After carefully reading the license, select the **I Agree** option if you consent to the terms of this license, then click **Next**. If you do not agree with the license, the installation will be cancelled.



## Disconnect your Device

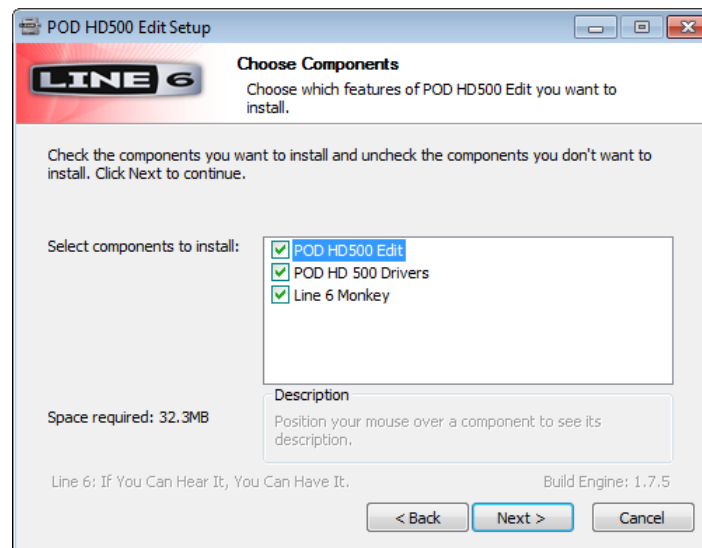
If you have not already done so, disconnect your USB cable from your POD HD500 device, then click **Next**.





## Choose Components to Install

There are three items available here:



- The **POD HD500 Edit** application.
- The **POD HD500 Drivers**. It required to install all these driver components to allow the POD HD500 Edit application to communicate with your device. The drivers also provide the benefit of allowing you to utilize your POD HD500 device as a high performance USB audio device with any popular Mac® DAW or audio playback applications!
- The **Line 6 Monkey** application. If you already have the same (or newer) version of Line 6 Monkey installed, then the box for it will remain unchecked. (Please see [page 4•1](#) for more about Line 6 Monkey.)

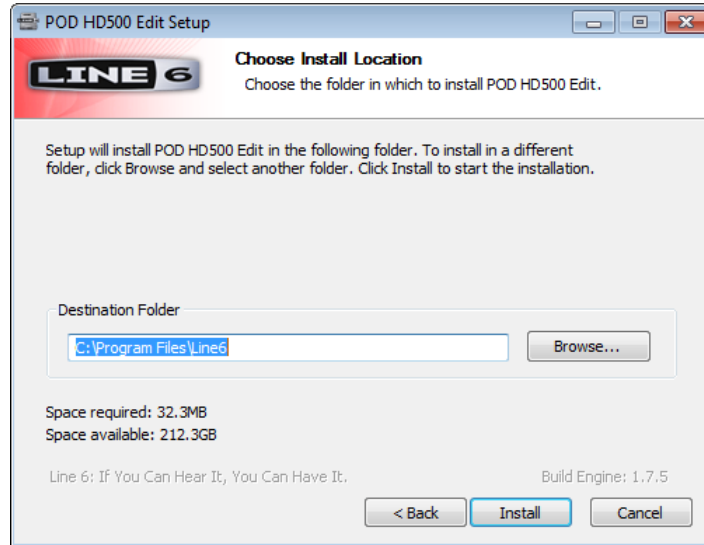
Click **Install** once you've made your selections.





## Choose Install Location

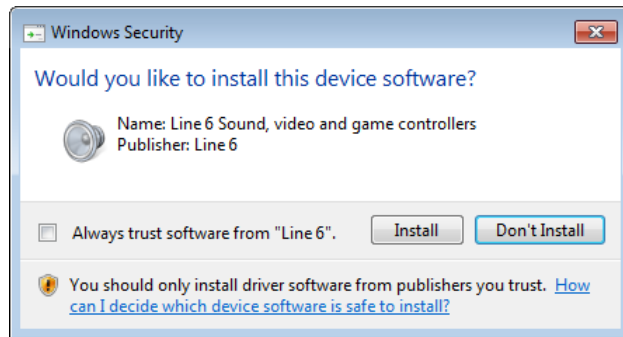
If you'd like to install the POD HD500 Edit application into the default, recommended location, just click the Install button.\* If you'd like to choose another location, click Browse:



\*Note: On Windows® 64-bit systems, the POD HD500 Edit application is installed within the \x86\ Program Files\ directory path.

## Security Alert

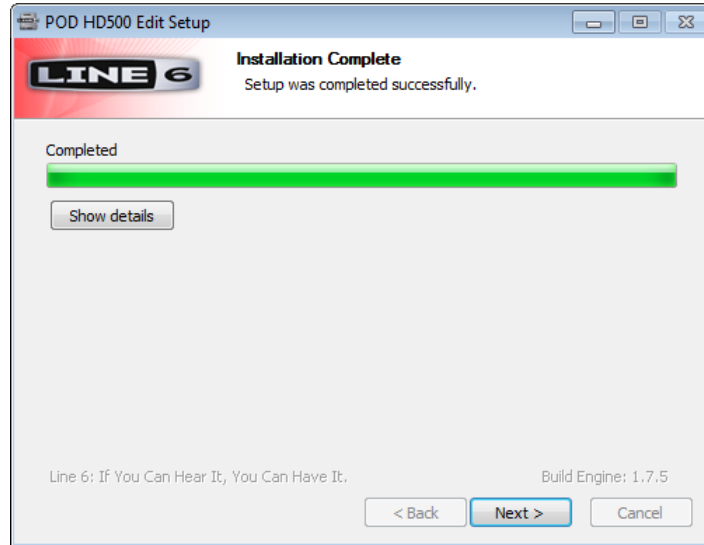
On Windows Vista® or Windows® 7, you may see this alert as the Driver files are being installed. This is a normal Windows® security feature, and it is perfectly safe for you to click the **Install** button and allow the installation to continue - we promise! You can optionally check the box for “Always trust software from Line 6” to avoid similar alerts on future Line 6 driver installs.





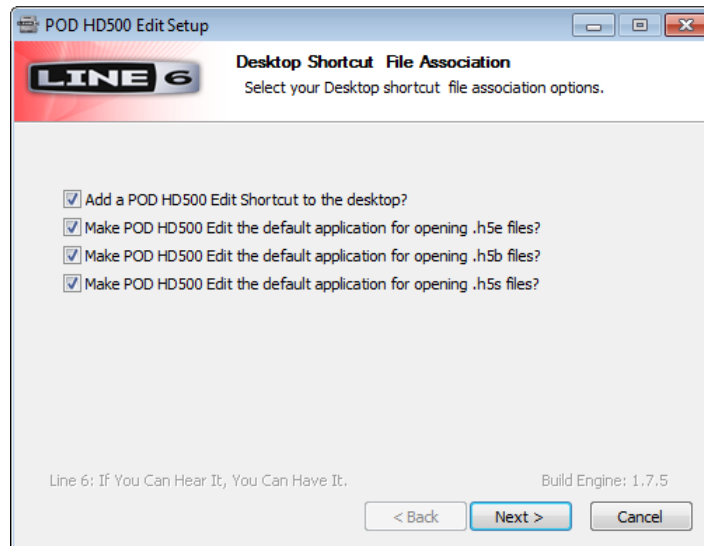
## Allow Installation to Complete

Allow the POD HD500 Edit installation process to do its thing – it will inform you once the installation has completed successfully. Click **Next** to continue.



## Desktop Shortcut and File Associations

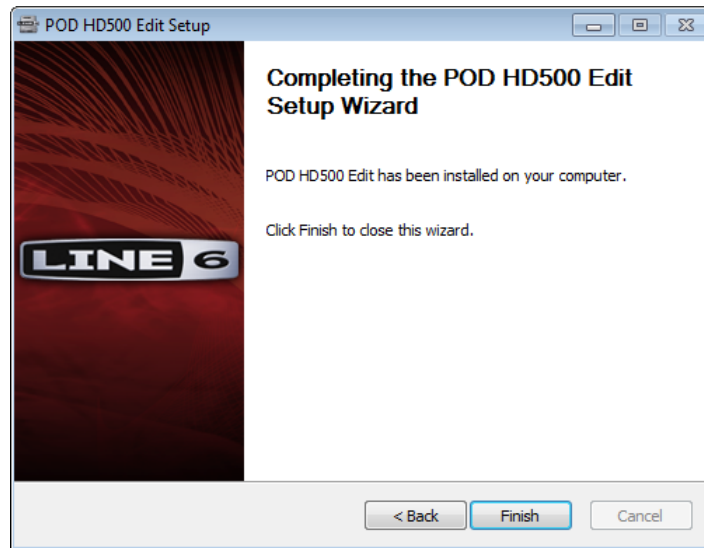
Next you are prompted if you would like a Shortcut icon for POD HD500 Edit to be added to your Windows® Desktop. You can also choose if you would like the POD HD500 Edit “.h5e” Preset, “.h3b” Bundle, and “.h5s” Set List file types to be “associated” with the POD HD500 Edit application. (That is - if you double-click one of these types of files within Windows®, it launches the POD HD500 Edit application automatically and loads the Preset/Bundle/Set List). It is recommend to check all boxes here. Choose your options and click **Next**.





## Finish

Done! The components you selected have been installed. Click the **Finish** button to exit the installer.



It is highly recommended that you next run Line 6 Monkey to allow it to check your system and see if there are any other available updates for your system.

Please see [“Updating with Line 6 Monkey™” on page 4•1](#) for more information.



## Uninstalling POD HD500 Edit

The POD HD500 Edit installation also adds the **Line 6 Uninstaller** utility on your system. You can find it by going to the Windows<sup>®</sup> Start button>Programs>Line 6>Tools. The Line 6 Uninstaller allows you to remove POD HD500 Edit, and/or any other installed Line 6 applications or device drivers individually. The following examples show the process for uninstalling POD HD500 Edit application on Windows<sup>®</sup> 7 - The process is the same for Windows Vista<sup>®</sup> or Windows<sup>®</sup> XP. Be sure to first exit POD HD500 Edit and all other applications, disconnect all connected Line 6 devices from your computer, then launch the Uninstaller and follow these steps.

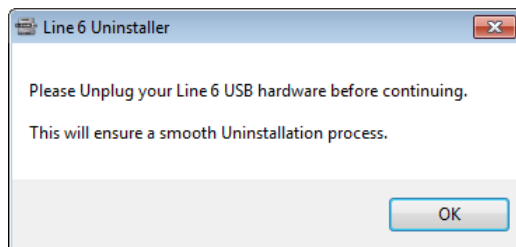
### Welcome

The first screen welcomes you politely - click **Next** to continue, or **Cancel** if you've changed your mind and decided you cannot live without this cool Line 6 software.



### Disconnect Your Hardware

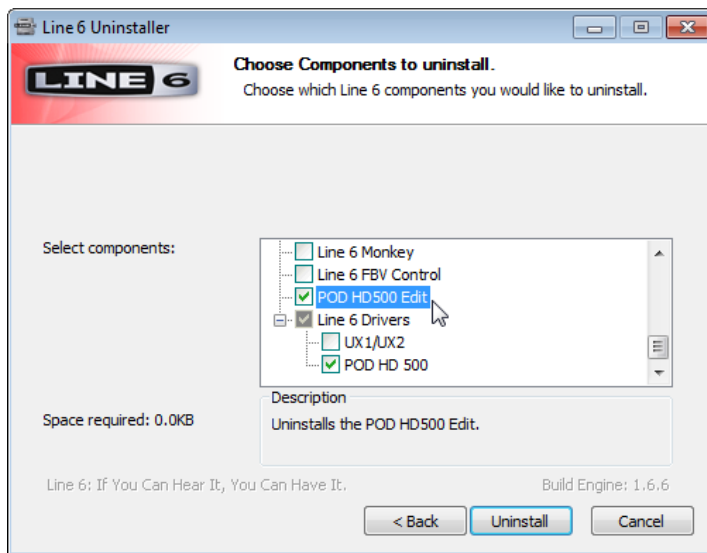
Another friendly reminder - If you have not already done so, please unplug the USB cable from any connected Line 6 hardware now. Click **OK** once items are disconnected, then **Next** to proceed.





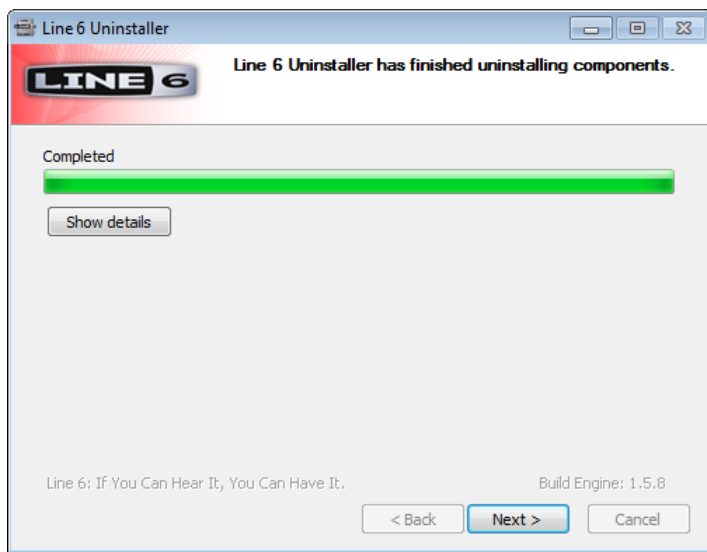
### Choose Components to Uninstall

Here you can check any Line 6 items you want to remove. You'll see individual options for all Line 6 applications and device drivers installed on your computer (POD HD500 Edit, POD HD500 Device Drivers, Line 6 Monkey, etc.). For this example, we'll select only the POD HD500 Edit application and its Drivers. Note that Line 6 Monkey is unchecked by default. It is usually a good idea to keep Monkey hanging around since he'll still be able to show you what Line 6 items are available for your system, and guide you through downloads and installations (see ["Updating with Line 6 Monkey™" on page 4•1](#) for more info). Once you've selected the desired components, click **Uninstall**.



### Uninstall

The uninstallation process will now run its course. Click **Next** once it has completed.





## Done!

This completes the process and the selected components are now removed from your system. Click **Finish** to close the dialog.



## Removing POD HD500 Edit Presets, Bundles & Set Lists

The Line 6 Uninstaller does not remove any of your POD HD500 Edit Preset, Bundle or Set List files from your computer. By default, POD HD500 Edit saves all its Preset, Bundle & Set List files to the **My Documents\Line 6\Tones\POD HD500 Edit** folder.

If you want to permanently remove all these files, drag the above folder to the Recycle Bin. However, we highly recommend you keep them around if you plan on installing POD HD500 Edit again. Or, copy the folder to a disk if you want to move them to another computer!





## LINE 6 MONKEY™ & ADDITIONAL RESOURCES

This chapter provides helpful information on obtaining Line 6 product updates and more online documentation.

### Updating with Line 6 Monkey™

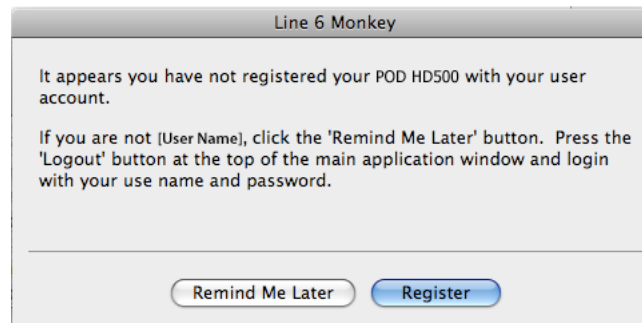
Line 6 Monkey is the intelligent update software utility, available free from Line 6. It is highly recommended that you use Line 6 Monkey to be sure you have the latest hardware updates & software versions for your POD HD500 device. If you already installed POD HD500 Edit, then you'll likely find Line 6 Monkey on your computer here:

- On Mac®, go to /Applications/Line 6 and double-click Line 6 Monkey.
- On Windows®, go to Start Menu \Programs \Line 6 \Tools and double-click Line 6 Monkey.

If you don't already have Line 6 Monkey installed, you can download it from [www.line6.com/monkey](http://www.line6.com/monkey).

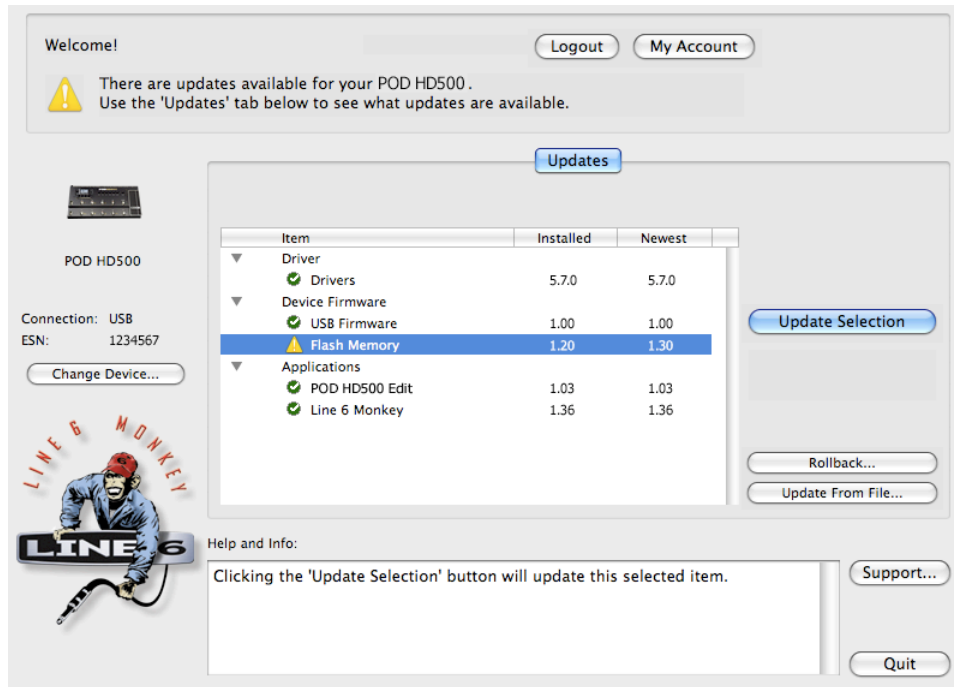
To follow are the steps for updating your device using Line 6 Monkey on Mac OS® X, however, the steps are the same for Windows® as well, except where noted.

With your device connected to your computer's USB port, be sure your device is powered on, then launch Line 6 Monkey. If Monkey prompts you to register your device, then do so now - it may be required to register to obtain some product updates. Just follow the prompts and Monkey will walk you right through a quick online registration! Return to Line 6 Monkey once you've completed the registration.



Monkey will then display your device's current firmware version and any available updates.





The Line 6 Monkey Updates screen, with POD HD500 connected

In the above example, Monkey has detected that a newer Firmware - Flash Memory version is available. To update the firmware, select the Flash Memory item and click **Update Selection**. Be sure to read the prompts carefully and Monkey will walk you through the steps to perform the update. It is especially important not to disturb your devices' controls and USB connection during the update! Exit Line 6 Monkey once the firmware update completes successfully.

## Online Documentation

Hungry for more info? We've got plenty of helpful resources just a click away.

- Several additional Manuals & Help documents covering POD HD500 Edit and related products:

[Line 6 Product Manuals](#)

- For technical support, choose from the many options listed on the Line 6 Support page, including the searchable Knowledge Base:

[Line 6 Support](#)

- Can't get enough of that Line 6 gear, or want to check out the latest Add-Ons and accessories? Head on over to the Line 6 Store!

[Line 6 Online Store](#)

- Join the Community! Line 6 users are welcome to join the Line 6 Online Community - The place to get FREE jam track, loops, lessons & tips from session pros, breaking new, special offers, and the User Discussion Forums:

[Line 6 Community](#)